

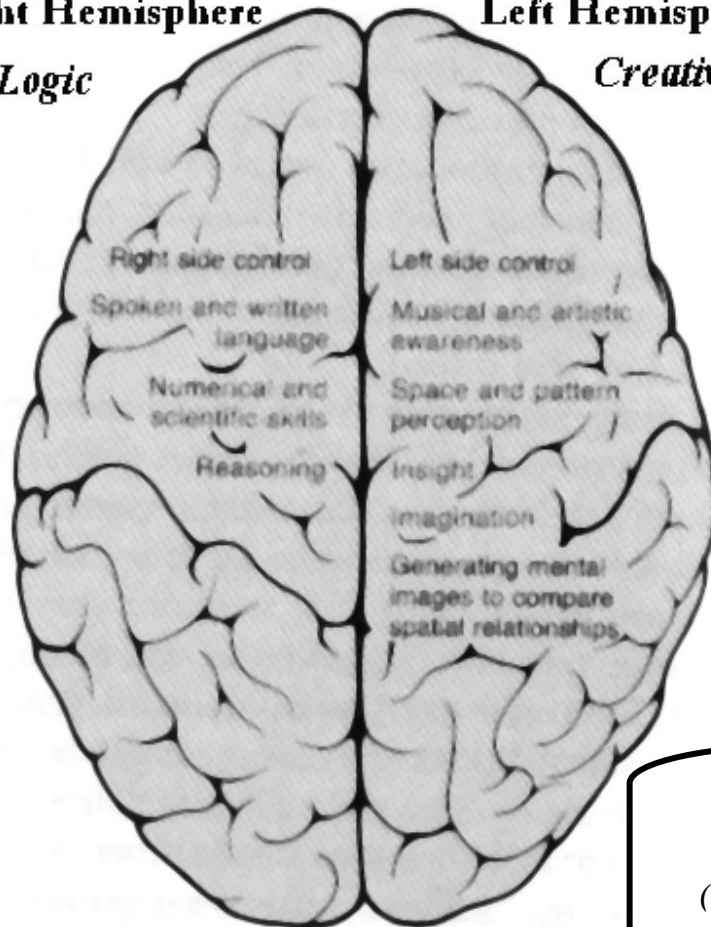
Hormonal control, Balance & Perception

Balance through the central regions

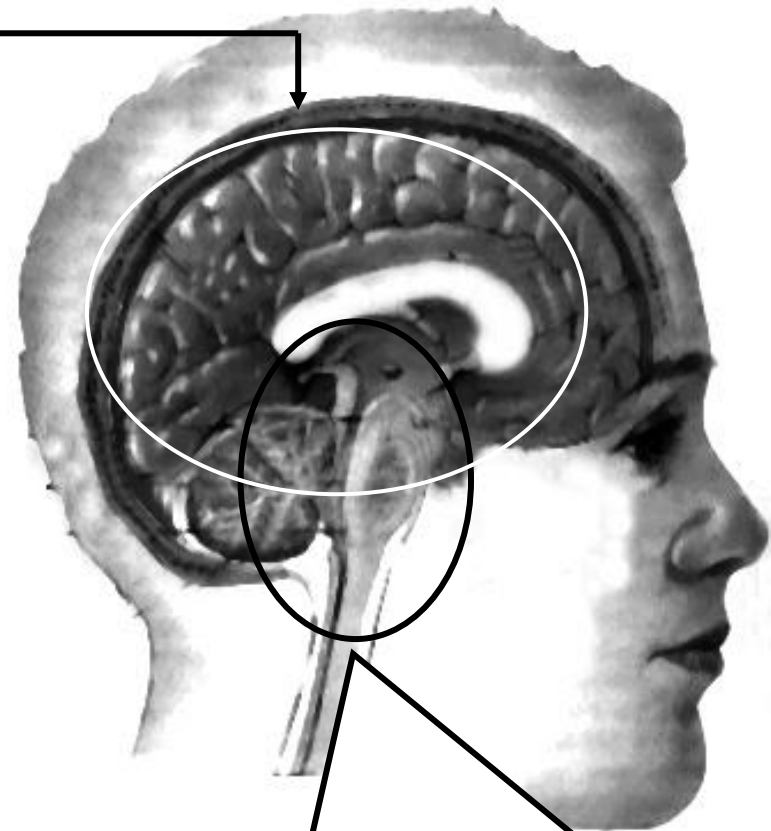
Right Hemisphere **Left Hemisphere**

Logic

Creative



Back



**'Fish-brain', evolved in the early vertebrates (Peicia,..... Cod-like fish).
Extremities inhibit central regions.
(Too much hormone - inhibits enzyme binding sites and affects proper, natural holistic functions of central regions)**

Adapted graphics from – Tortora et al. (1993) Principals of Anatomy & Physiology

John king (2002) - Hormonal control, Balance & Perception